

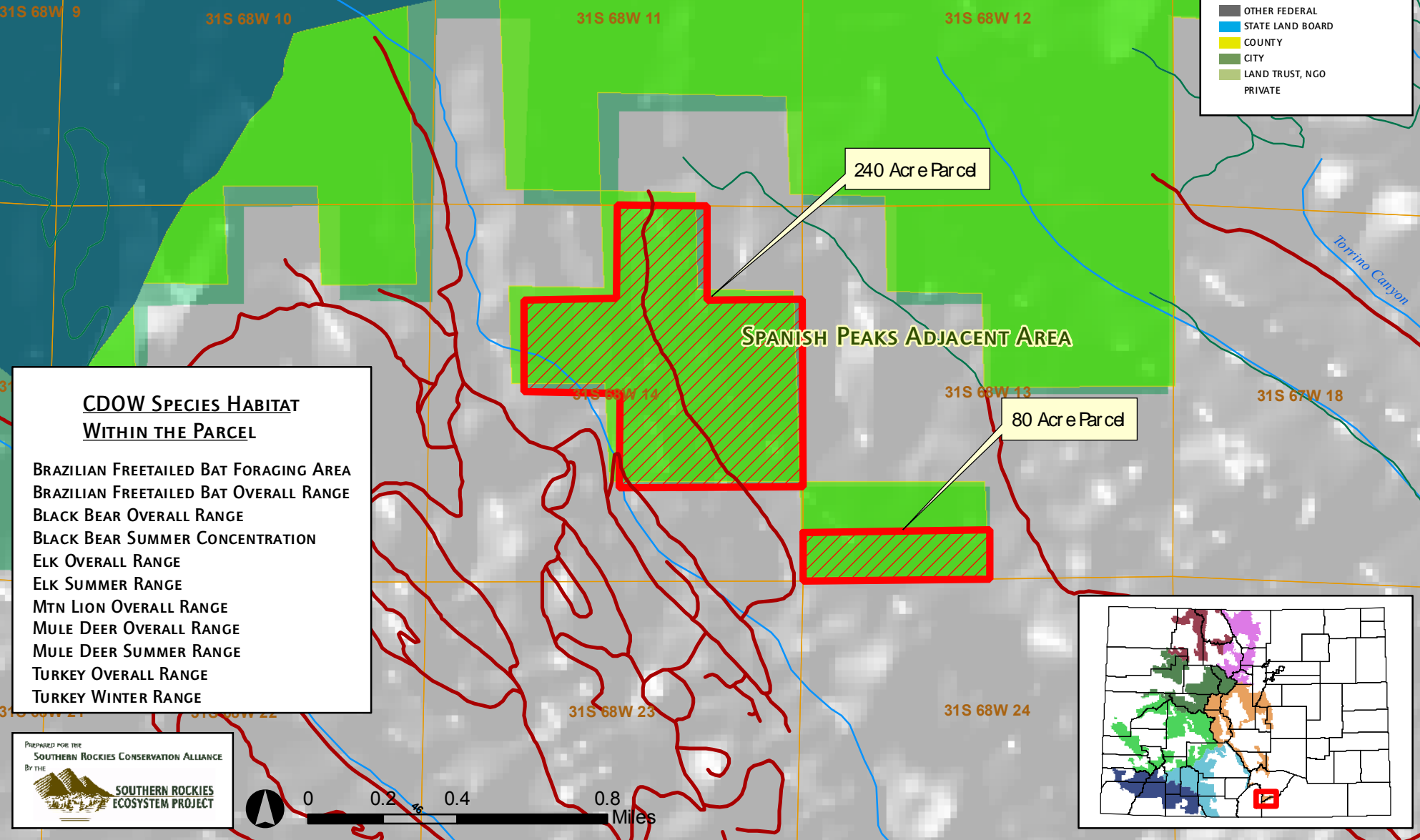
COLORADO USFS LANDS FOR SALE IN THE FY07 BUDGET

SPANISH PEAKS ADJ. ROADLESS AREA PIKE-SAN ISABEL NF

Mapped to the Parcel Boundary

LEGEND

- CO USFS POTENTIAL SALE
- USFS INVENTORIED ROADLESS AREAS
- USFS ROUTES**
 - ROAD
 - RAILROAD
 - TRAIL
 - OTHER, UNKOWN
 - RIVERS
- TOWNSHIP RANGE SECTION
- HIGHWAYS
- WILDERNESS
- CO LAND MANAGER**
 - USFS
 - OTHER FEDERAL
 - STATE LAND BOARD
 - COUNTY
 - CITY
 - LAND TRUST, NGO
 - PRIVATE



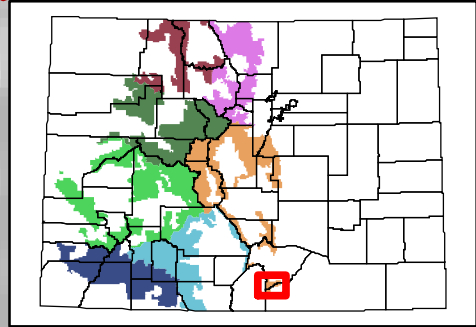
240 Acre Parcel

80 Acre Parcel

SPANISH PEAKS ADJACENT AREA

CDOW SPECIES HABITAT WITHIN THE PARCEL

- BRAZILIAN FREETAILED BAT FORAGING AREA
- BRAZILIAN FREETAILED BAT OVERALL RANGE
- BLACK BEAR OVERALL RANGE
- BLACK BEAR SUMMER CONCENTRATION
- ELK OVERALL RANGE
- ELK SUMMER RANGE
- MTN LION OVERALL RANGE
- MULE DEER OVERALL RANGE
- MULE DEER SUMMER RANGE
- TURKEY OVERALL RANGE
- TURKEY WINTER RANGE



PREPARED FOR THE
SOUTHERN ROCKIES CONSERVATION ALLIANCE
BY THE
 SOUTHERN ROCKIES ECOSYSTEM PROJECT

